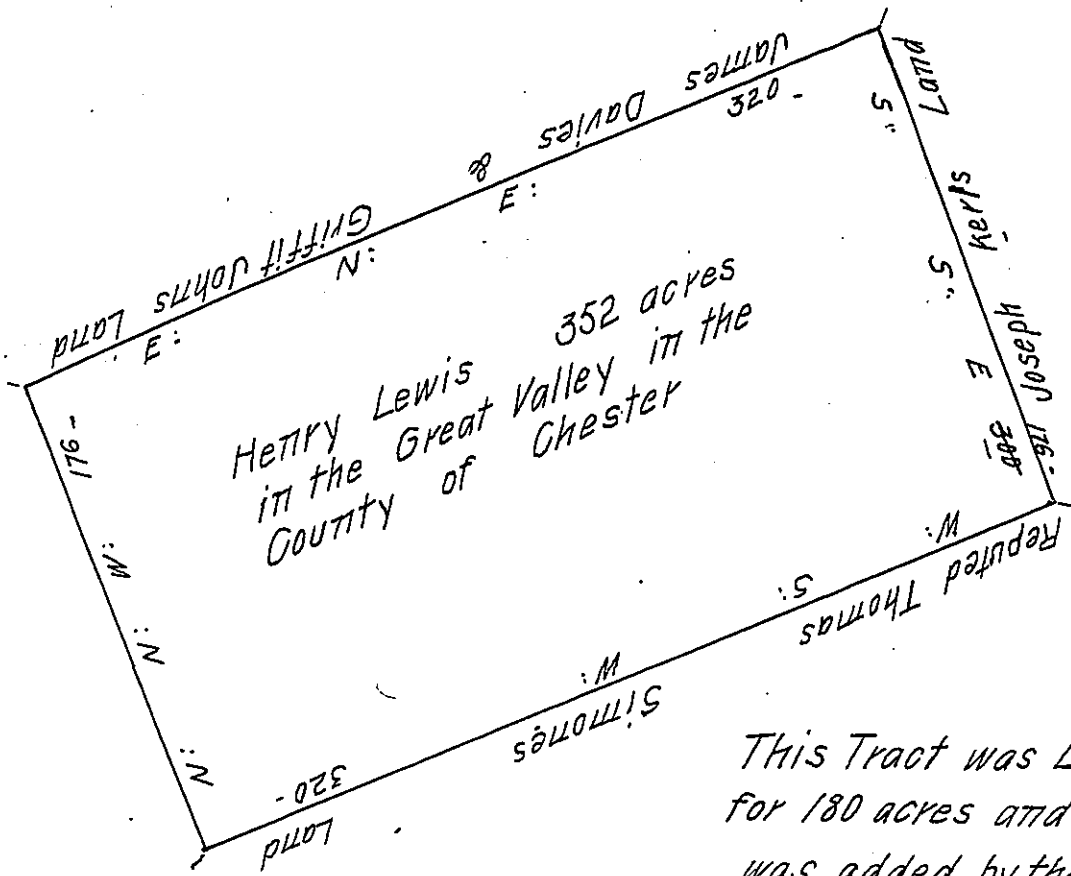


$\frac{259}{578}$
 $\frac{54 \frac{1}{2}}{36}$
 $\frac{90}{4.10.7 \frac{1}{2}}$



This Tract was Laid out
 for 180 acres and 79 acr.
 was added by the s^d H: Lewis
 bought of Hump. Ellis the Overplus
 is 68 beside allowance

Re surveyed the above Tract of Land Within the bounds of the Welsh Tract the
 14th day of the 11th m^o 1703: and is according to the bounds above described
 Returned into the General Survey^s Office at Philadelphia the 14th day of the
 3^d m^o 1706 Containeing 352 acres

David Powell

IN TESTIMONY that the above is a copy of the original remaining on file in
 the Department of Internal Affairs of Pennsylvania, made
 conformably to an Act of Assembly approved the 16th day of
 February, 1833, I have hereunto set my Hand and caused
 the Seal of said Department to be affixed at Harrisburg,
 this Fourteenth day of May 1909

Henry Houch

Secretary of Internal Affairs.